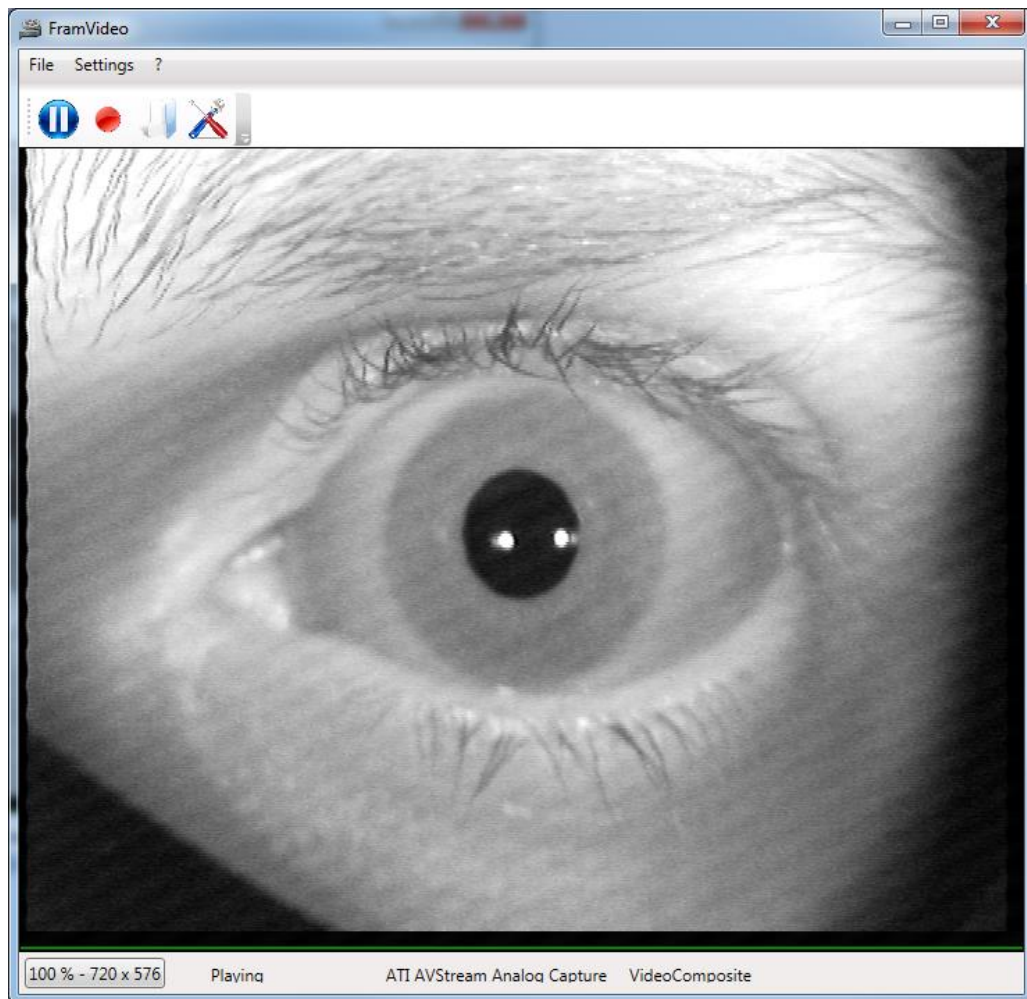


# FRAMVIDEO – USER MANUAL



Version  
3.1

Applies to FramVideo 2.0 and higher

This document explains the features and utilization of the video capturing software developed by FRAMIRAL: FRAMVIDEO.

---

## Contents

<b>I. USER MANUAL</b> .....	<b>3</b>
1. Installation.....	3
2. Using the software.....	4
a) Start the software.....	4
b) Change the settings .....	4
c) Display a video.....	6
d) Customize the main window.....	7
e) Context Menu .....	8
f) Record a video.....	10
g) Change the “Recording” settings .....	11
h) Keyboard shortcuts.....	12
i) FAQ .....	13

---

# Overview

For years, our company has been developing its own softwares to control the various medical devices we design (Multitest Equilibre, Subjective Visual Vertical, Framiscope, Rotational Chair, NystamoGraphy Video, Dynamic Visual Acuity).

FramVideo is a useful tool that allows you to display and record videos played by any device connected to your computer through video input (IR camera, webcam, Framiscope...).

FramVideo has been made to be easy to use for everybody. Some users will find the usual toolbar buttons very handy, whereas others will use keyboard shortcuts. The automatic video device detection and the availability of a panel of codecs will make it easy to record videos.

---

## I. USER MANUAL

### 1. Installation

First of all, be sure that you have administrator rights with the Windows session you are logged in.

FrameWork .NET4, from Microsoft must be up to date. If you don't have any other Framiral software installed on your computer, you probably need to install it. Download it from the link below (or via Google, "Framework 4").

<http://www.microsoft.com/downloads/en/details.aspx?FamilyID=9cfb2d51-5ff4-4491-b0e5-b386f32c0992&displaylang=en>

Follow instructions.

Once installed, run Windows Updates:

**Windows XP:** Start menu, All Programs, Windows Update then click on Custom Install. Remember to install the Optional updates.

**Windows 7/8:** Control Panel, Windows Update, Check for updates (on the left). Remember to install the Optional updates.

**Once installed, restart your computer and Check for updates again, until no update is available.**

Download Framvideo.zip from our website (download instructions available on request), and unzip it.

Click on the « setup.exe » file and follow instructions (Click on next as many times as needed).

Start the program via the shortcut on your desktop.

You have 15 days of trial before the license key is needed (« ? » menu – « License »).

---

## 2. Using the software

### a) Start the software

Start the software via the shortcut available on the desktop, or via the « Start » menu, « All Programs », « Framiral ».

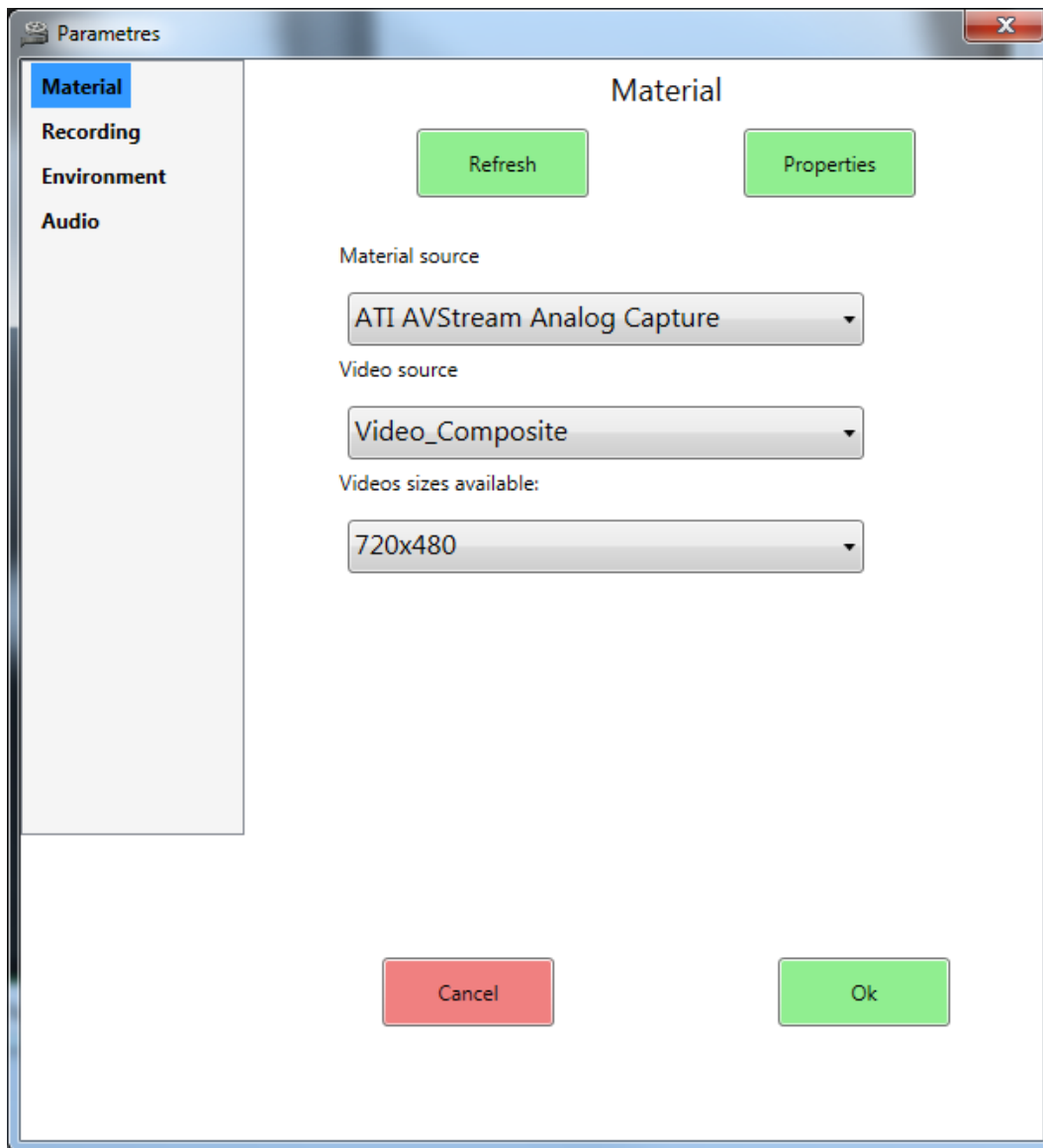


FIGURE 1 – DESKTOP SHORTCUT

### b) Change the settings

When starting FramVideo for the first time, the “Settings” window pops up, so you can select the video input.

Select the video device via the top dropdown box. If the device you expect to use is not in the list, check if it is well connected to the computer, and that the driver is installed correctly, then click on “refresh”. If this doesn’t work, try to restart FramVideo and go to the “Settings” menu.



**FIGURE 2 – DEVICE SETTINGS**

Once the video device is selected, select the video input via the second dropdown box.

Depending on the device, you can choose the size of the video. For better performances, it is recommended to use 320 x 240.

Click on the green "Validate" button to continue.

When starting FramVideo the next time, this setting window will not pop up. FramVideo saves the settings automatically. You can change these settings via the "Settings" menu.

### c) Display a video

The main window will display automatically (if the settings are correct, and the video device on) the video from the video input, in real time.

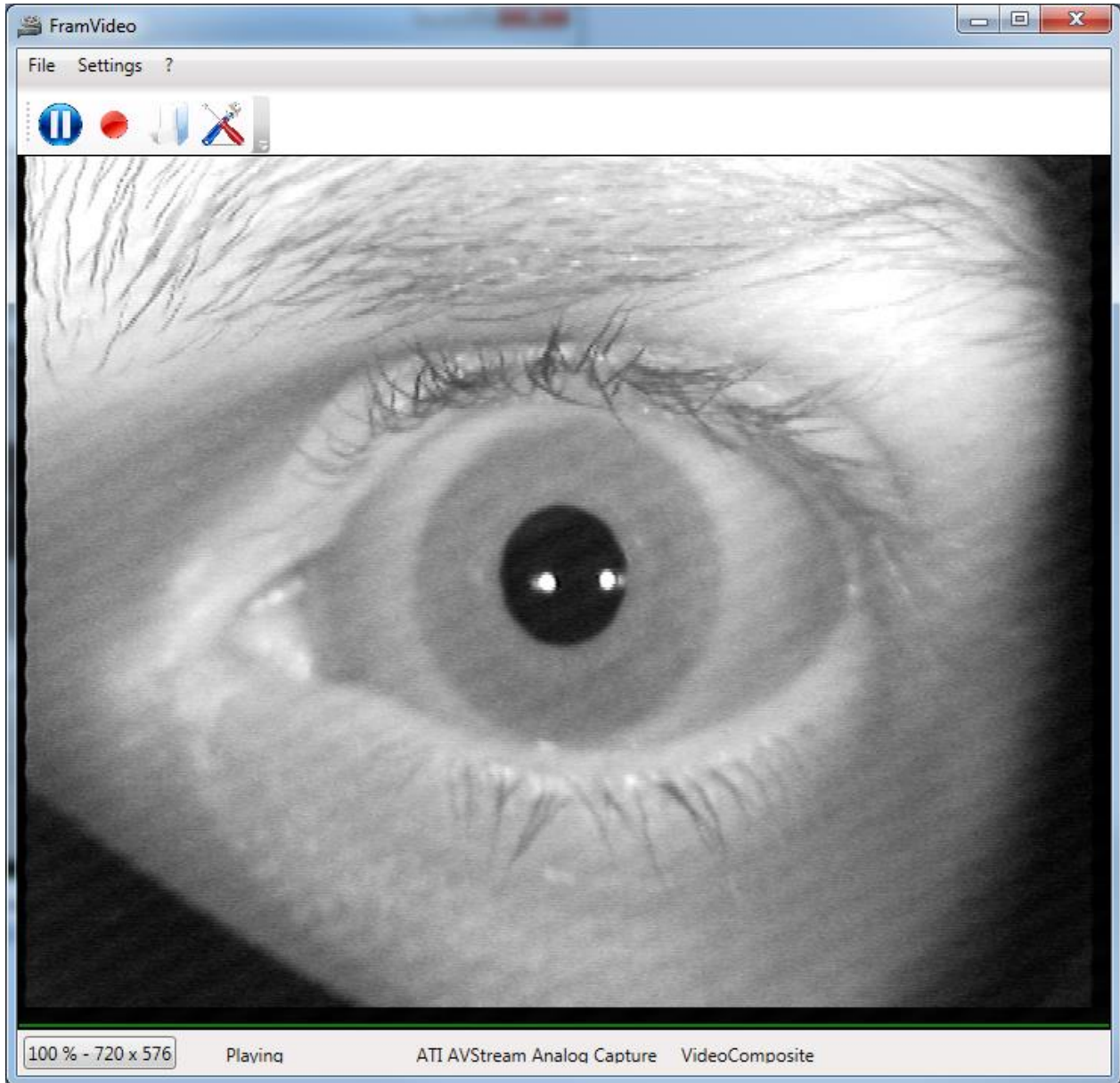


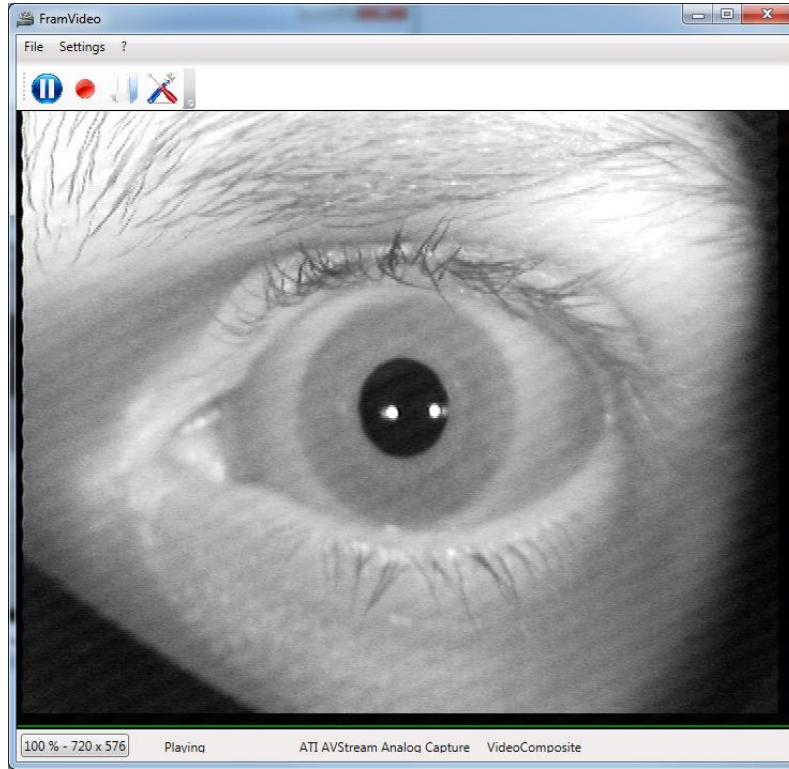
FIGURE 3 – MAIN WINDOW

---

#### d) Customize the main window

To resize the window, drag a corner of the window like any other.

You can reset the window size back to original default size by clicking on the button at the bottom left corner, indicating the percentage size of the current window compare to the original.



**FIGURE 4 – MAIN WINDOW**

You can also customize the window via the right click (cf next section), or via keyboard shortcuts (section h).



## e) Context Menu

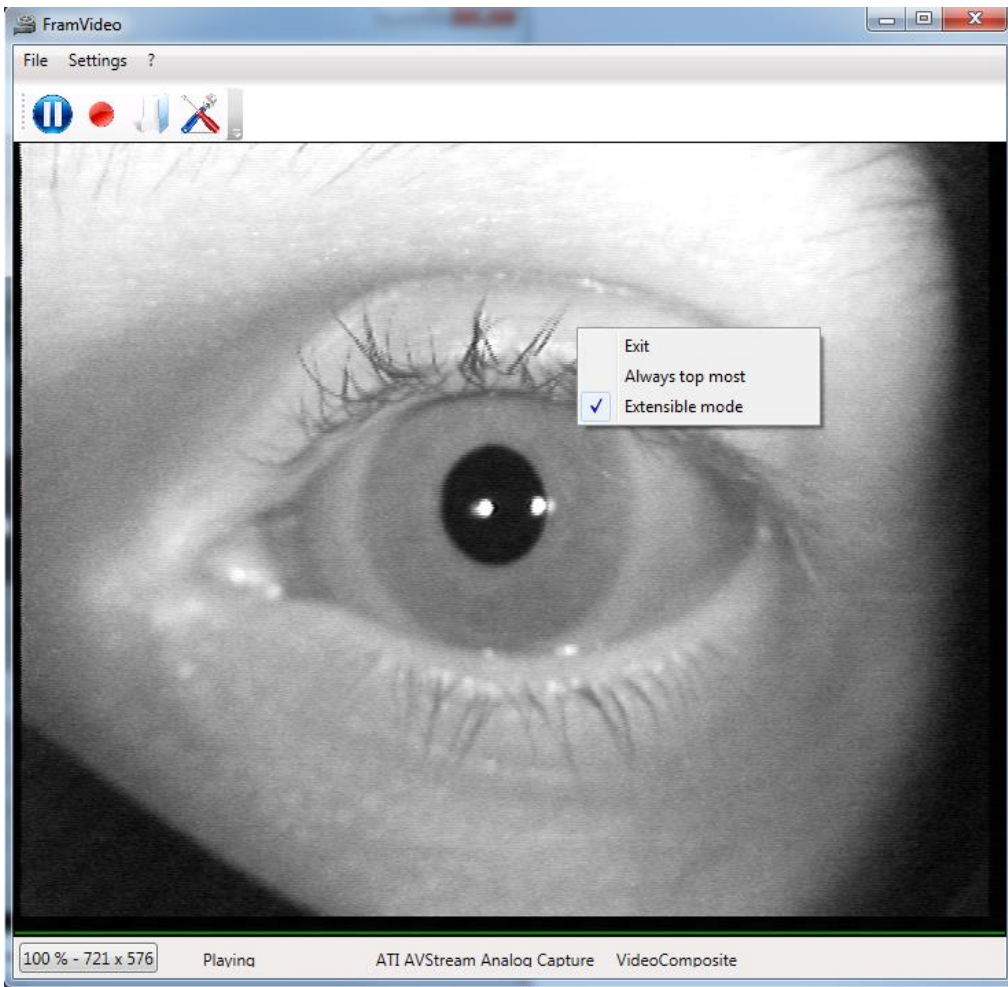


FIGURE 5 - MENU CONTEXTUEL

The context menu appears when right clicking on the FramVideo window.

You can:

- **Exit:** Exit application
- **Always TopMost:** Enable « TopMost » or disable it. In this mode, the FramVideo window will be on top of any other window on your screen. This is very useful if you want to use it as a monitoring window (just leave it on a corner of your screen).
- **Extended Mode:** Enable « Extended » or disable it. If you disable Extended mode, the window will turn into Minimal Mode. In this case, all the status bars, tool bars, and menus will disappear: the video only is displayed. This will optimize the space used on your screen, and the only actions left are available via the context menu or keyboard shortcuts.

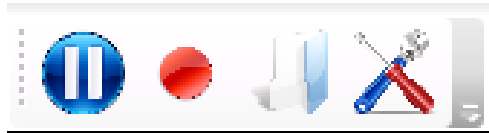


**FIGURE 6 – MINIMAL MODE**

---

**f) Record a video**

To record a video, check that a video is running on the main window.  
Then, click on the red button located in the toolbar, to start recording.



**FIGURE 7 – TOOL BAR**

Finally, to get to the folder where the video has been saved in, click on the “Open video folder” button in the toolbar, or via the “File” menu, “Open video folder”.

The default folder is `C:\Temp\`, and the videos are saved under  
« `framVideoAAAAMMJJ-HHmmSS.avi` », where AAAAMMJJ-HHmmSS is the date of the record.

You can modify these settings by clicking on the “Open Settings” button, located in the toolbar, or via the “Settings” menu. Then, click on the “Recording” tab on the left.

### g) Change the “Recording” settings

You can modify these settings by clicking on the “Open Settings” button, located in the toolbar, or via the “Settings” menu. Then, click on the “Record” tab on the left.

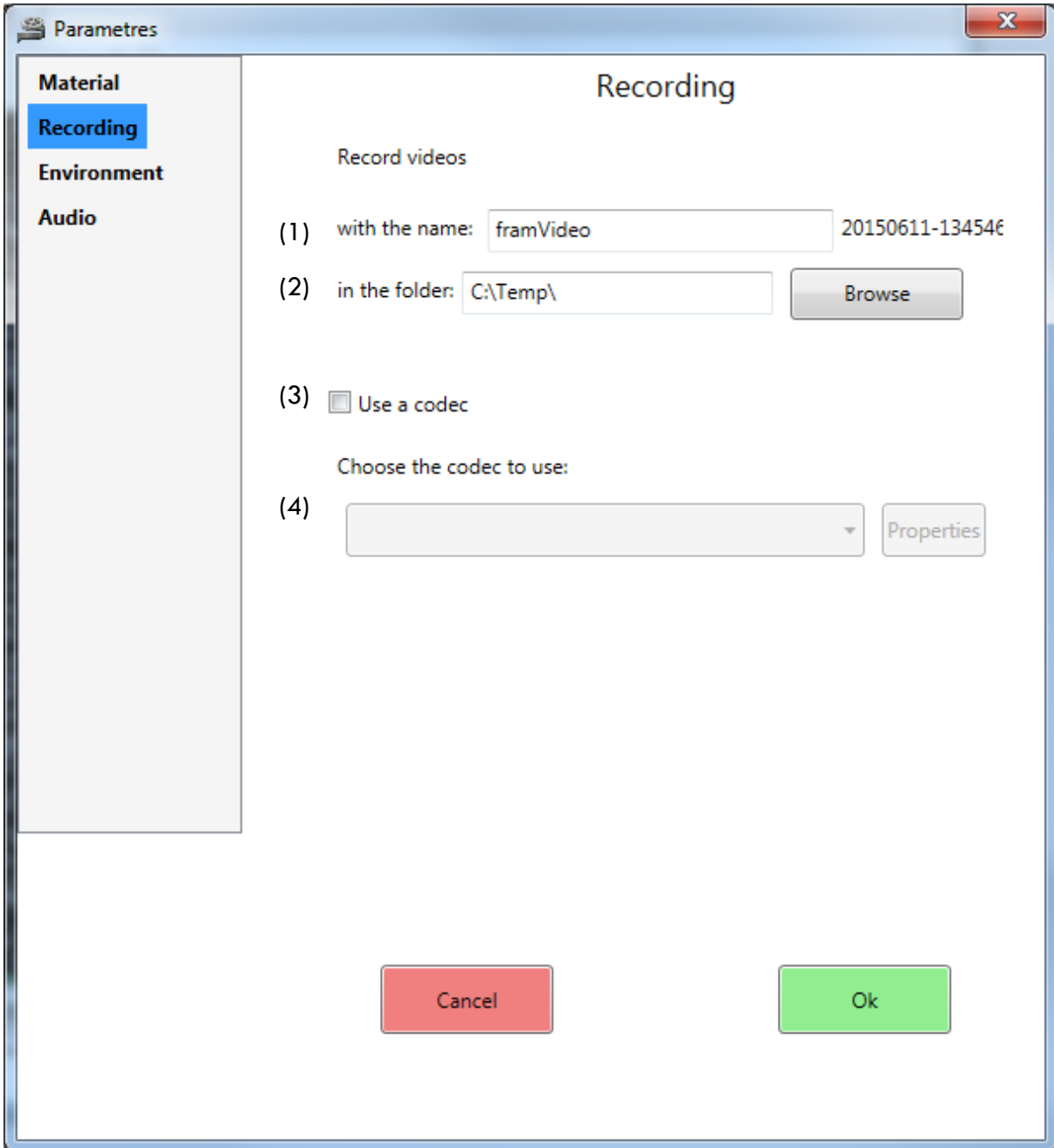


FIGURE 8 – RECORD – NO CODEC

- (1): The name of the videos.
- (2): The folder to save the videos into.
- (3): Check to use a codec.
- (4): If you checked to use a codec, select a codec in the list.

#### What is a codec ?

A codec is a program that compresses and decompresses video files.

For example, the XVID codec will read XVID compressed videos, but not MJPEG compressed videos. Compressing a video will make it take less memory on the Hard drive. Then, compressing video allows you to record longer videos, or many more videos.

To use a codec, check the “Use a codec” box and select a codec in the dropdown box (list of all available codecs on the computer).

We recommend the use of XVID codec (free) which works perfectly with FramVideo. The use of any other codec is under your responsibility. You can find the **XVID** codec on the web via a browsing page, or directly at: <http://www.koepi.info/xvid.html>

Once downloaded, install it and follow instructions.

Start the program named « Configure Encoder » located in “All Programs” – “XVID” – “Configure Encoder”. Click on « Other Options... », uncheck the « Display encoding status » option, click OK, and click OK.

Restart FramVideo. Select XVID in the codec list and validate. You can now record videos.

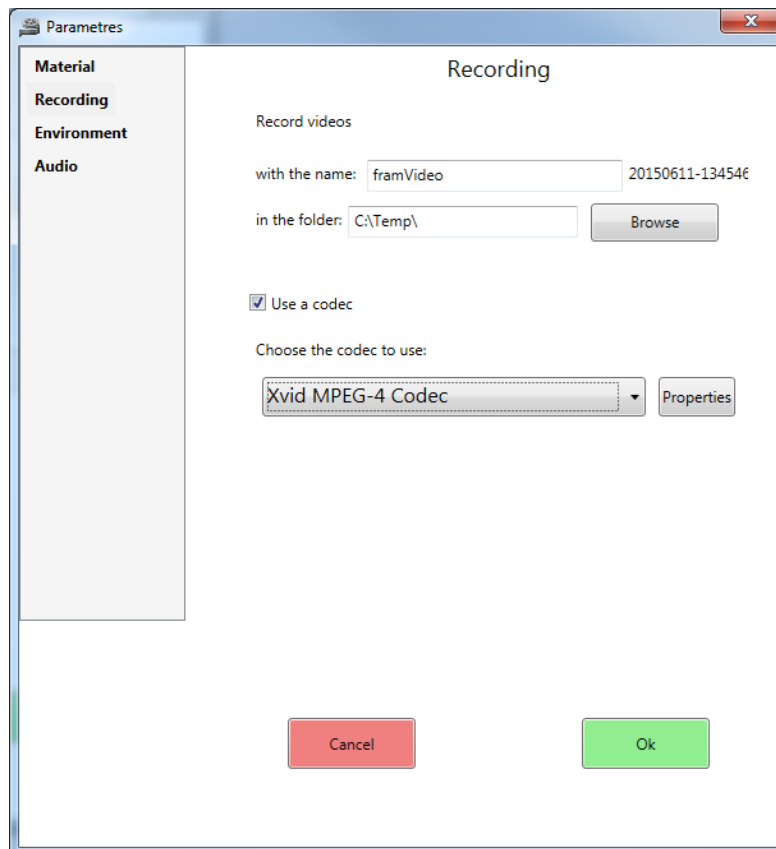


FIGURE 9 – RECORD WITH A CODEC

## h) Keyboard shortcuts

There are a few keyboard shortcuts available in FramVideo. You can get the list of them via the « ? » menu, then « Help ».

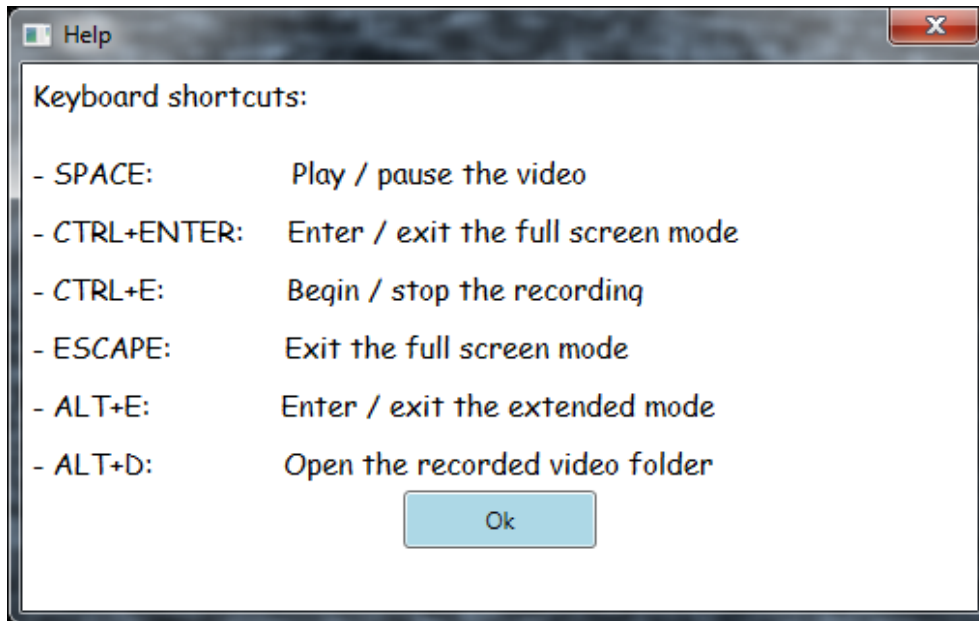


FIGURE 10 - HELP

You can also double-click on the main window to go fullscreen. To escape fullscreen mode, double-click again, or press ESC.

## i) FAQ

### 1) **I've selected a video input but there is no video on main window.**

- Check that your video device is well connected to the computer, on the right input.
- Go back to the setting window, and check that the selected device is the good one.
- In the status bar of the main window, the video device's name should be displayed. If not, the device is not selected. If yes, close FramVideo and restart it.
- Check that you are not using the video device with another software at the same time (for example VirtualVCR, AMCap or VNG). If the video device is already in use, FramVideo cannot use it.

### 2) **I'm trying to record a video with no codec and FramVideo stops working.**

- Some computers cannot record videos without a codec. Close FramVideo, install a codec (for example XVID, see section g). Restart FramVideo, and change the codec settings.

### 3) **I can't find the videos folder.**

- Click on "Open the videos Folder" in the toolbar to open the folder where the videos are saved. If there isn't any, check that you actually have recorded videos.

---

4) **My computer is very slow when recording.**

- In the “Settings”, if possible, select a smaller video size (for example 320x240).
- Don’t resize the main window, keep it to 100%.

5) **I have a LC007 error when starting FramVideo.**

- Check that FramVideo is running under Administrator mode.

6) **I have another error.**

Close FramVideo.

Open Windows Explorer, and go to:

Windows 7:

Computer, Disk C, Users, Framiral, AppData, Roaming, FRAMIRAL, VNS.

Windows XP :

Computer, Disk C, Documents and Settings, framiral, Applications Data, FRAMIRAL, VNS.

Delete the “user.config” file.

Restart FramVideo.

If you still have a problem, contact Framiral.

---

# Table of Illustrations

Figure 1 – Desktop shortcut .....	4
Figure 2 – Device settings.....	5
Figure 3 – Main window .....	6
Figure 4 – Main window .....	7
Figure 5 - Menu contextuel.....	8
Figure 6 – Minimal Mode .....	9
Figure 7 – Tool bar .....	10
Figure 8 – Record – no Codec.....	11
Figure 9 – Record with a Codec.....	12
Figure 10 - Help.....	13



---

# FRAMIRAL®



## FRAMIRAL

107, Avenue Jean Maubert

06130 GRASSE – Le Plan

FRANCE

Tel: +33 422 480 107

Fax: +33 9.56.372.472

Email: [contact@framiral.fr](mailto:contact@framiral.fr)