

Installation of FRAMIGEST 1.3 and higher

Simplified Installation (LocalDB database)

WINDOWS XP: use the appropriate installation manual

This manual guides you through the simplified installation of FRAMIGEST. To use FramiGest with a database server, please refer to the appropriate installation manual (see section I to understand what kind of installation you need).

First of all, be sure that the Window account you are logged in has the administrator privileges, and is locked by a password on the welcoming screen. Also, it is recommended to turn your antivirus off during this installation.

Warning! The Windows Account password is mandatory.

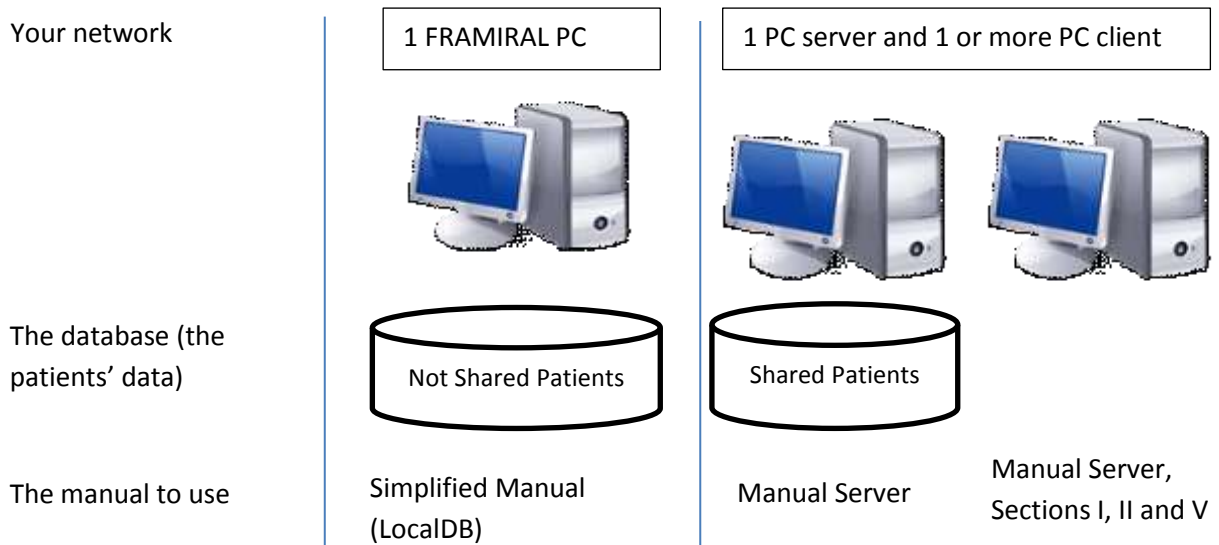
WARNING! The provided information is very important. Don't try to change the setting, or to skip a step. If you are not confident, contact FRAMIRAL.

Contents

I]	Configuration.....	2
II]	.NET Framework	3
	A) Installation.....	3
	B) Updates	3
III]	SQL Server 2012 Express	4
	A) SQL Server® 2012 – Express Edition –LocalDB	4
	B) Microsoft® SQL Server® 2012 Native Client	6
	C) Microsoft® SQL Server® 2012 Command line.....	9
IV]	FramiGest	12

I] Configuration

If you are using this manual, you've chosen to use FRAMIGEST with only one computer.
If not, close this manual, and refer to the network installation manual.



You have to know if your Windows version is **32bits** or **64bits**.

One way to get the information is through the Command Panel, section « *System and security* », « *System* », « *System Type* ».

For example, a 64bits version will display: « *64-bits Operating System* »

II] .NET Framework

A) Installation

Windows 7:

The computer must have Framework .NET4.5, from Microsoft.

Download it and install from:

<http://www.microsoft.com/en-US/download/details.aspx?id=30653>

Windows 8:

.NET 4.5 is incorporated in Windows 8. There is nothing to do.

B) Updates

You have to check for Windows updates, and install them all (see instructions below).

Once you've installed update, restart your computer and check for updates again. Install any available update, and start all over again **until the updates 'list is empty**.

It is possible that you'll have to restart your computer a few times. Installing all updates doesn't mean the next Search for Updates will give no results.

Windows 7:

Start Menu, All Programs, Windows Update then *Search for updates* (on the left). Don't forget to check the optional updates.

Windows 8:

From the Desktop, bring the mouse to the bottom right corner, then click on « Settings », « Control Panel », « Windows update ». Click on *Search for updates*. Don't forget the optional updates.

III] SQL Server 2012 Express

A) SQL Server® 2012 – Express Edition –LocalDB

Go to the following website:

<http://www.microsoft.com/en-US/download/details.aspx?id=35579>

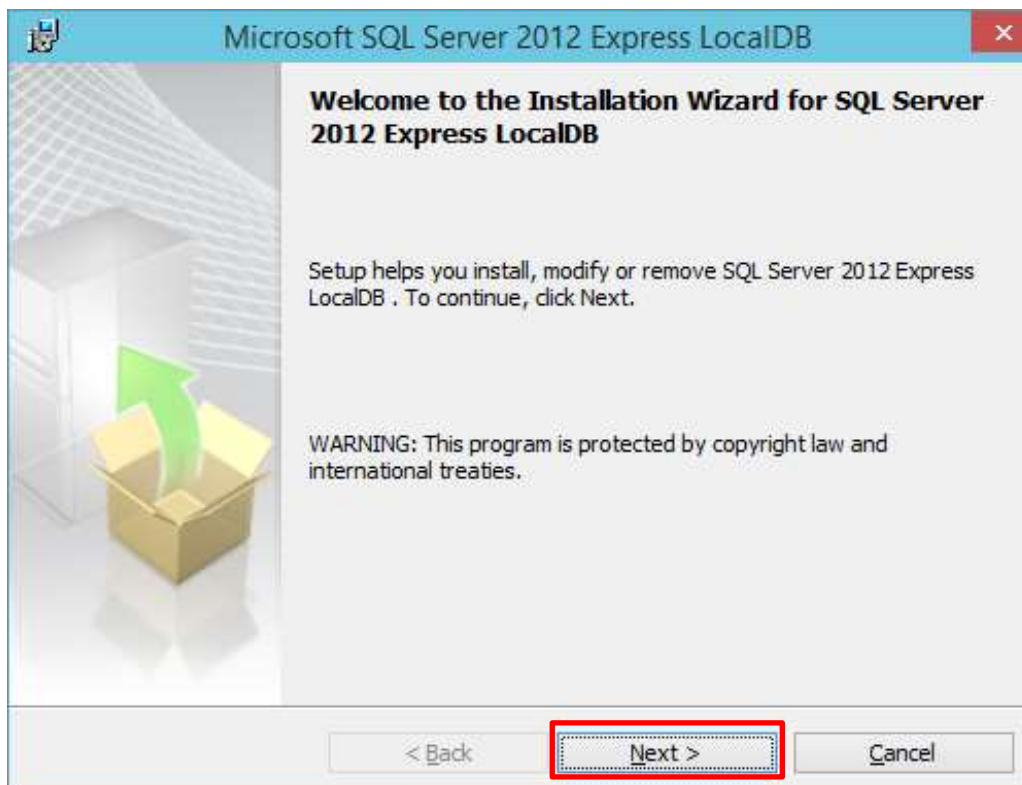
Download and start the installation of (**English version**) :

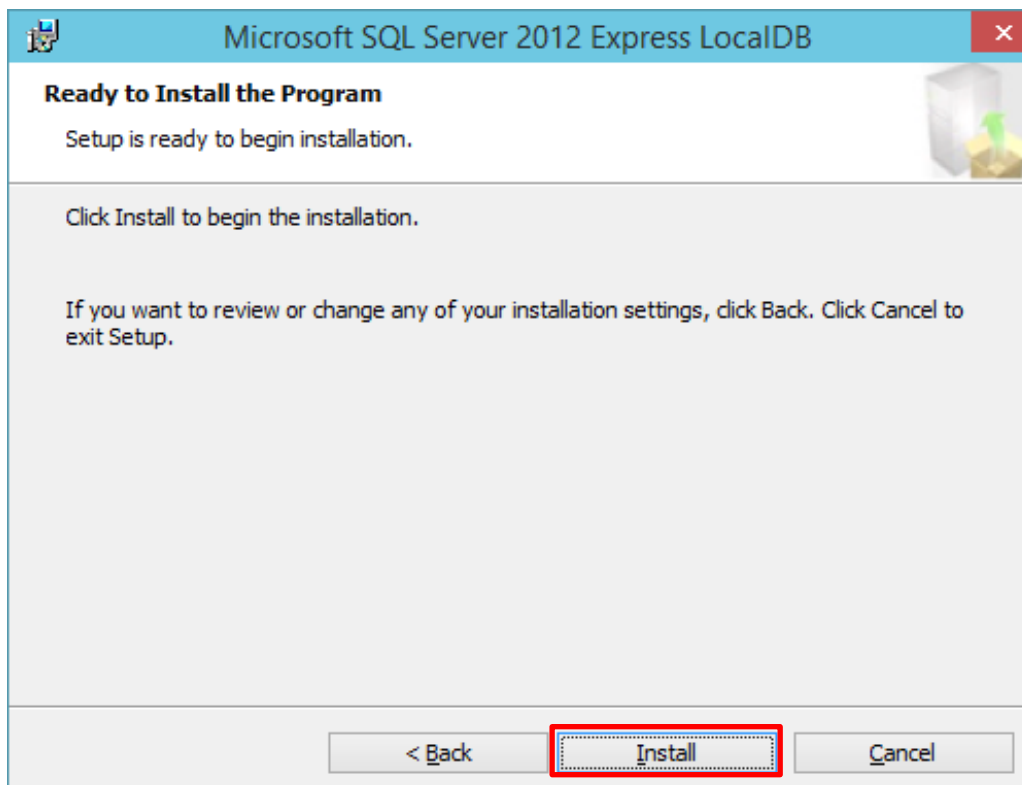
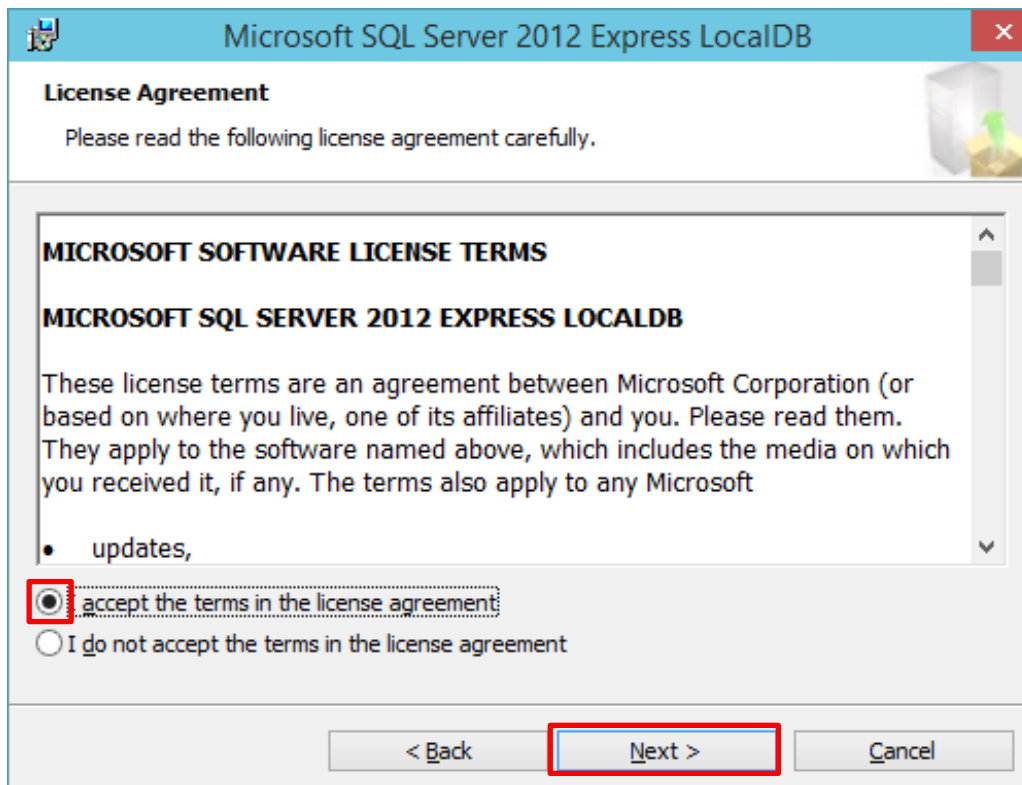
- ENU\x86\SqlLocalDB.msi (32 bits system)

Or

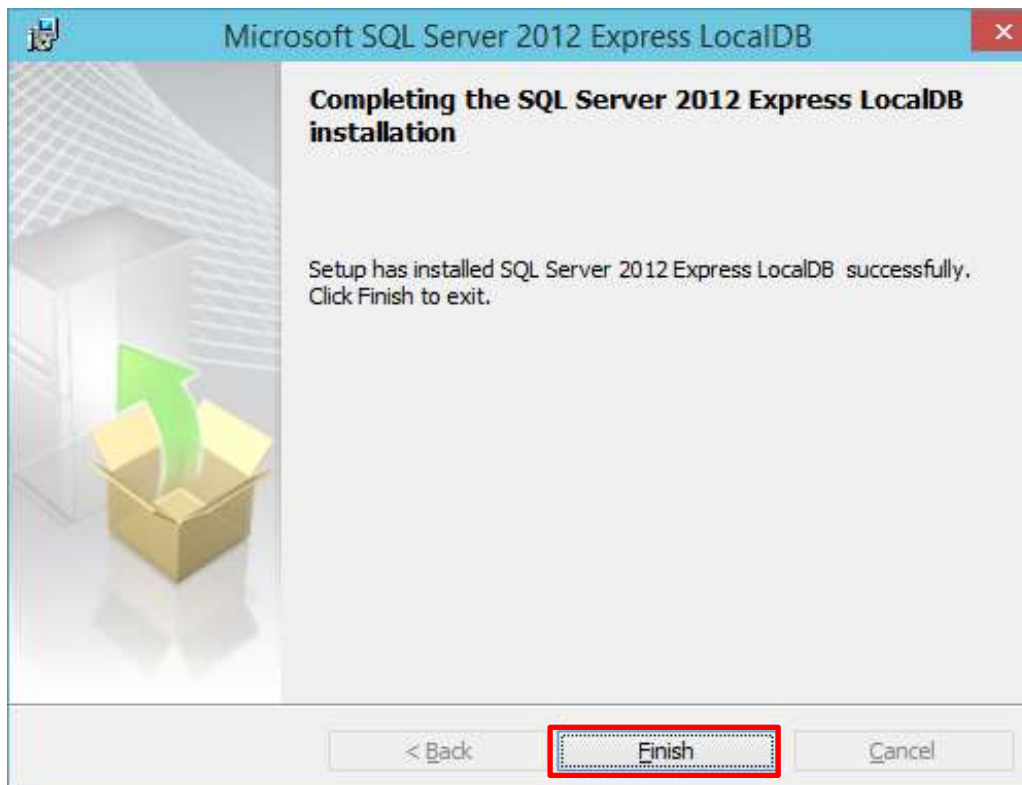
- ENU\x64\SqlLocalDB.msi (64 bits system).

Follow the instructions, as shown in the following screen shots.





If a window: « User account control » asks for your authorization, answer « Yes »



The installation is done!

Restart your computer.

Start Windows Updates (or Microsoft Update).

Click on « Search for updates ».

You will probably find more updates like « Visual studio » and « Visual C++ ». They all must be installed.

Once installed, restart your computer again, and **update until the update list is empty. Then restart again and, and repeat the process until no updates are found.**

B) Microsoft® SQL Server® 2012 Native Client

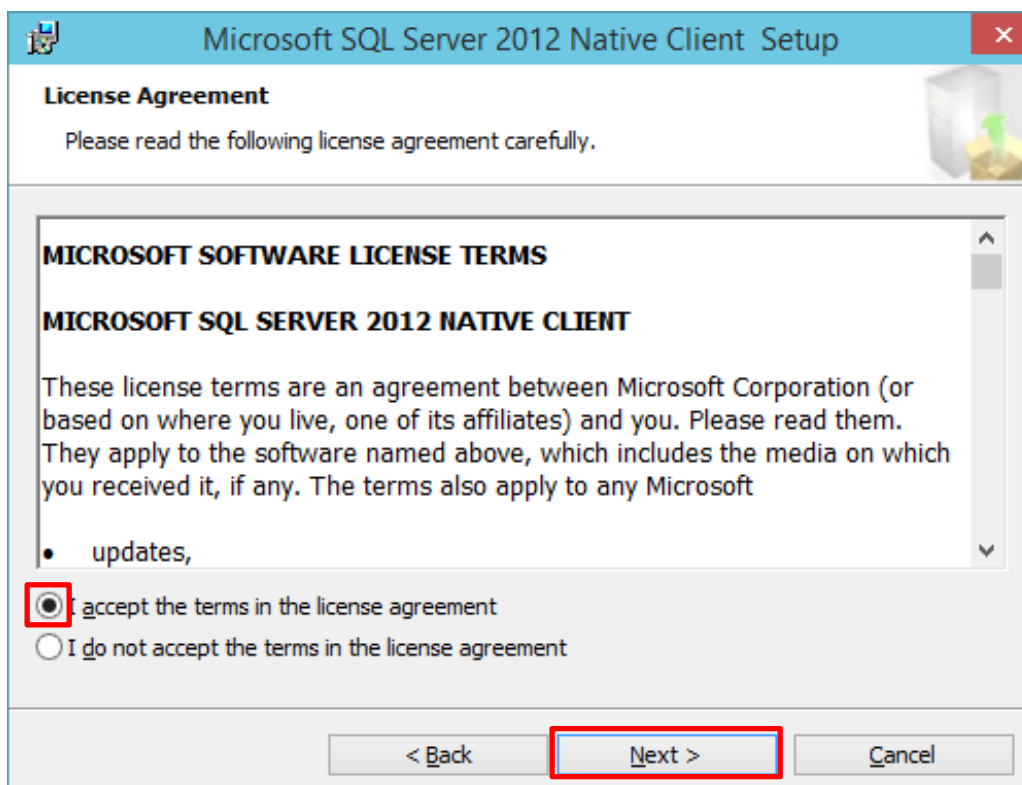
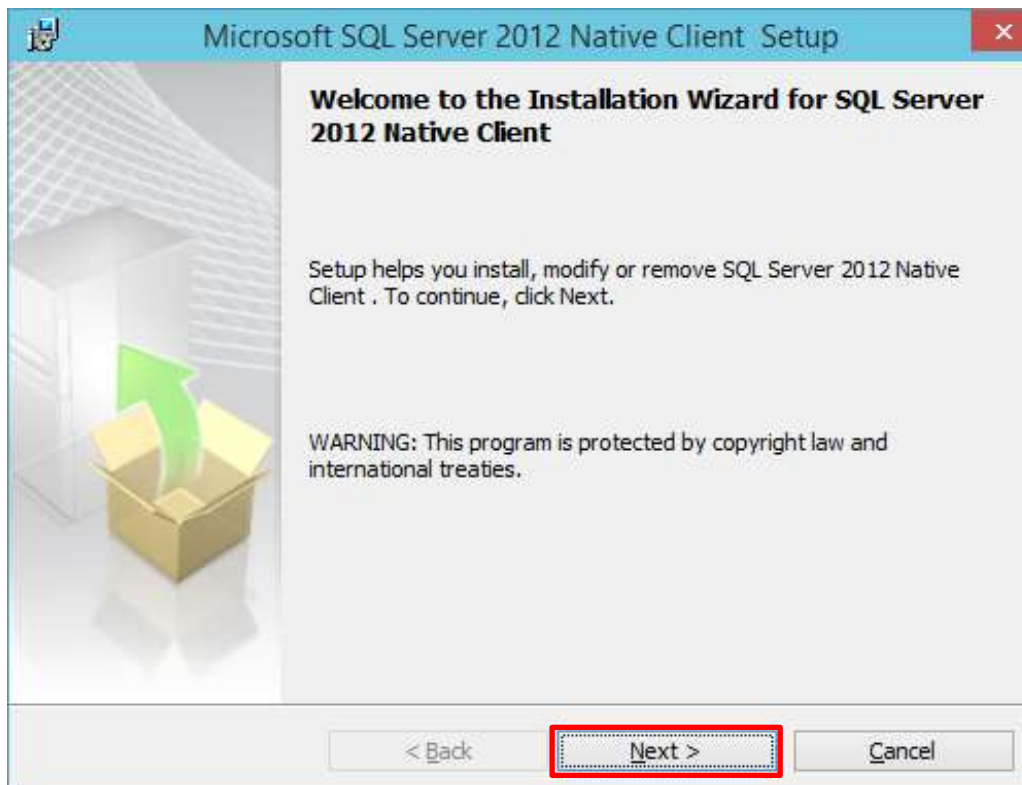
Download and execute `sqlncli.msi` from:

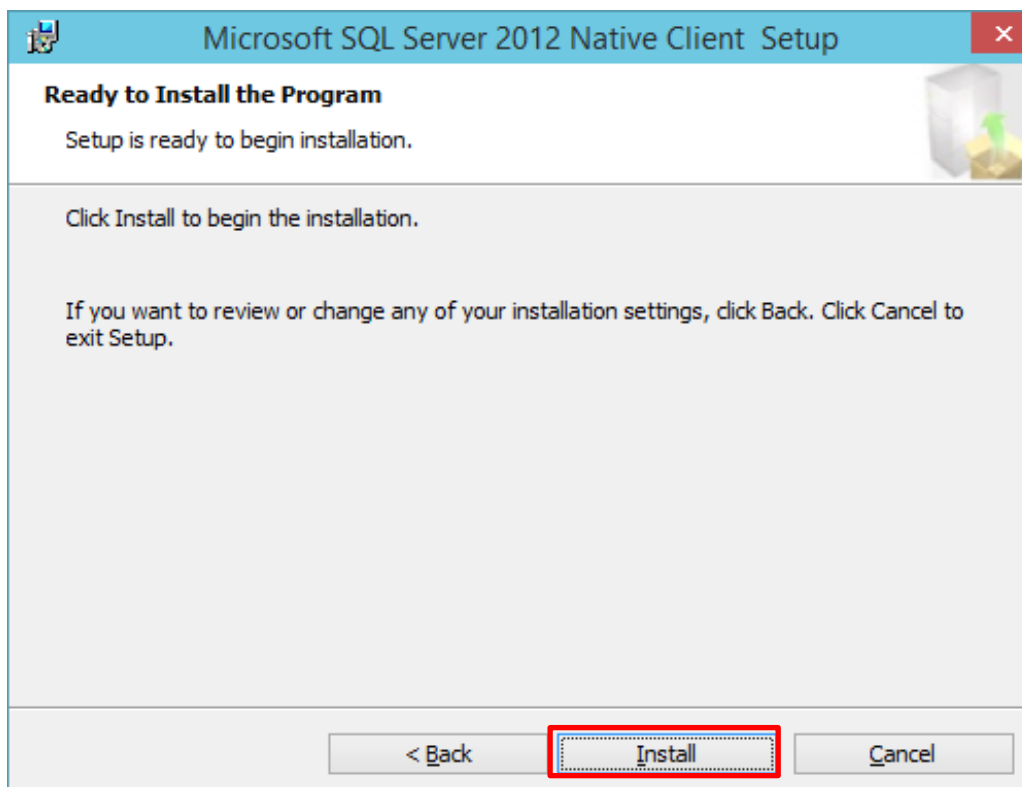
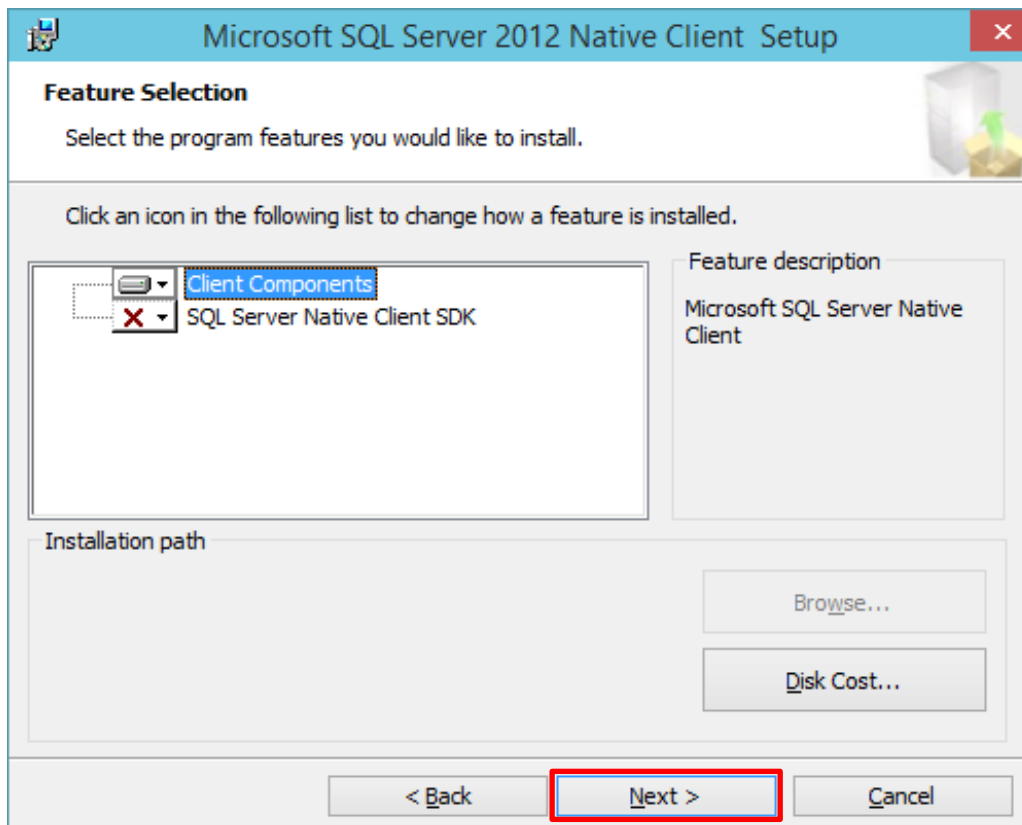
- <http://go.microsoft.com/fwlink/?LinkID=239647&clcid=0x409> (32 bits system)

Or

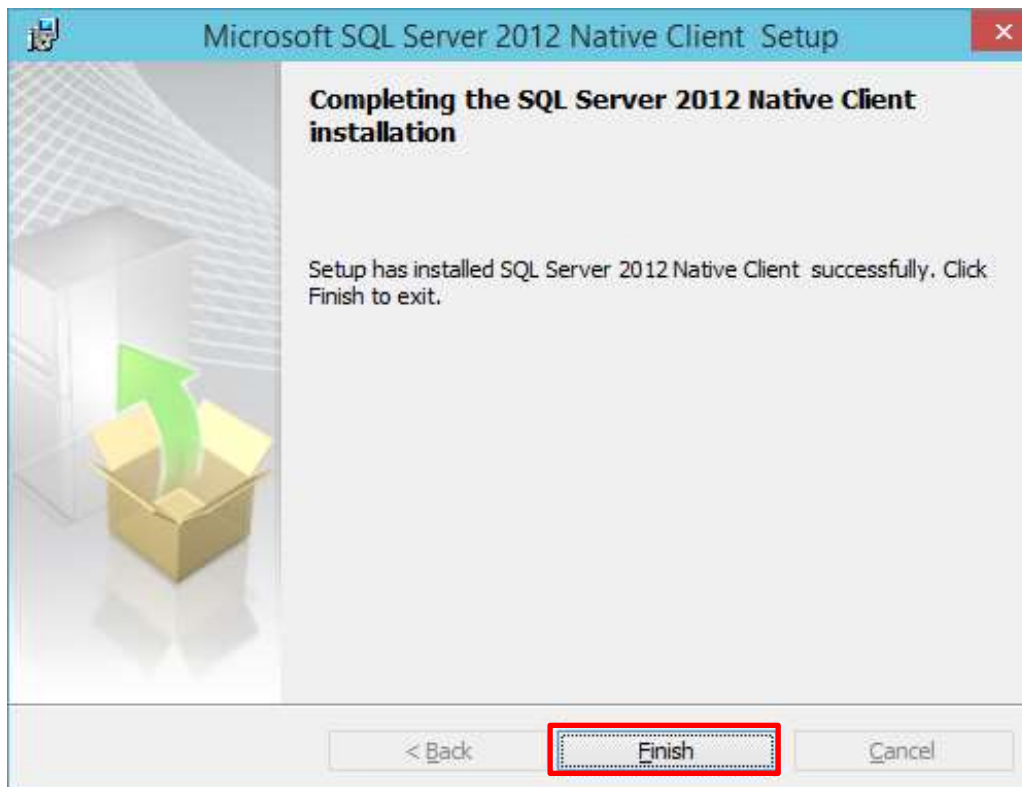
- <http://go.microsoft.com/fwlink/?LinkID=239648&clcid=0x409> (64 bits system).

Follow the instructions, as shown below:





If a window: « User account control » asks for your authorization, answer « Yes »

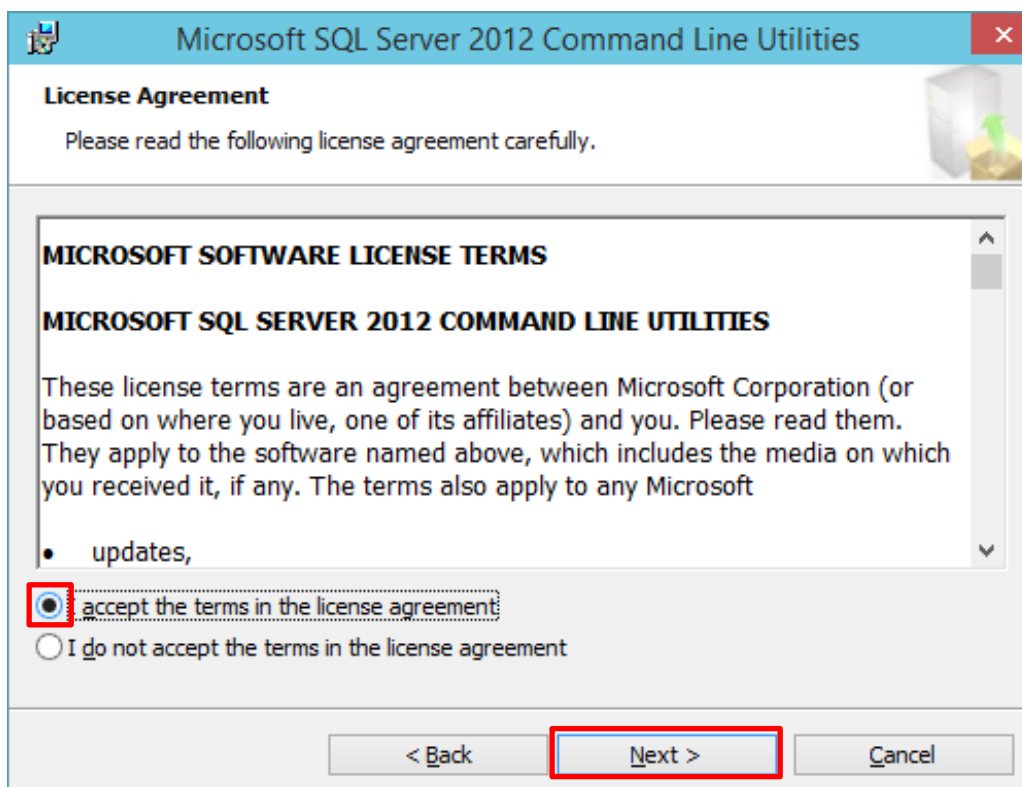
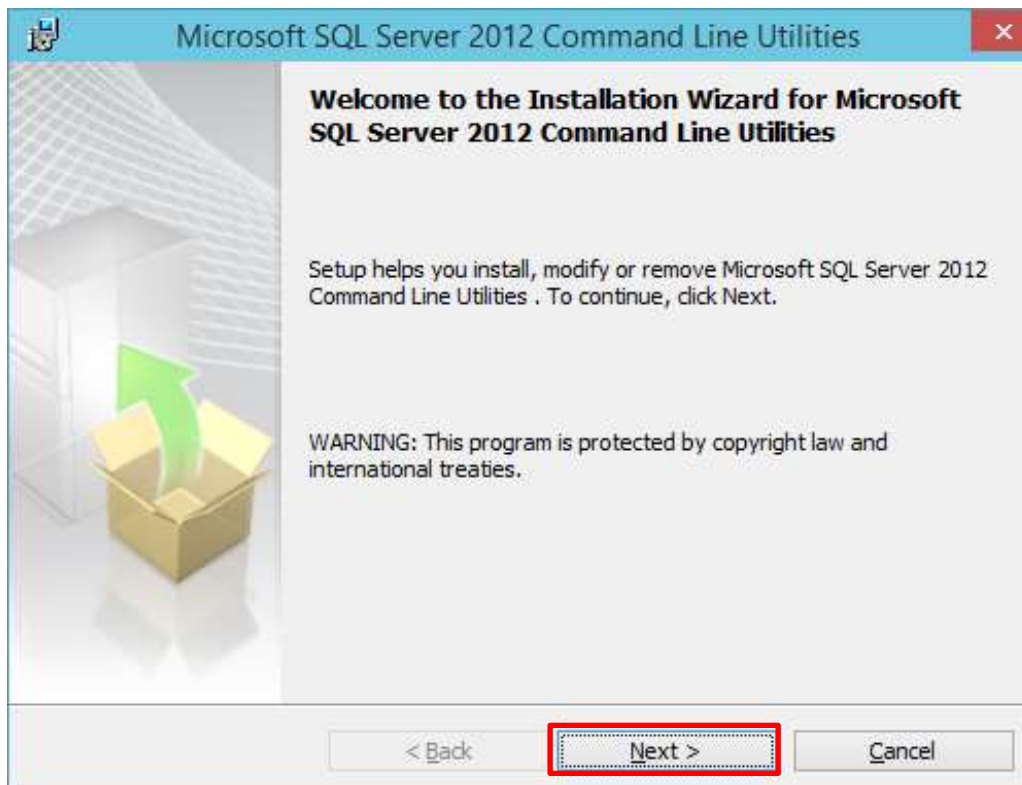


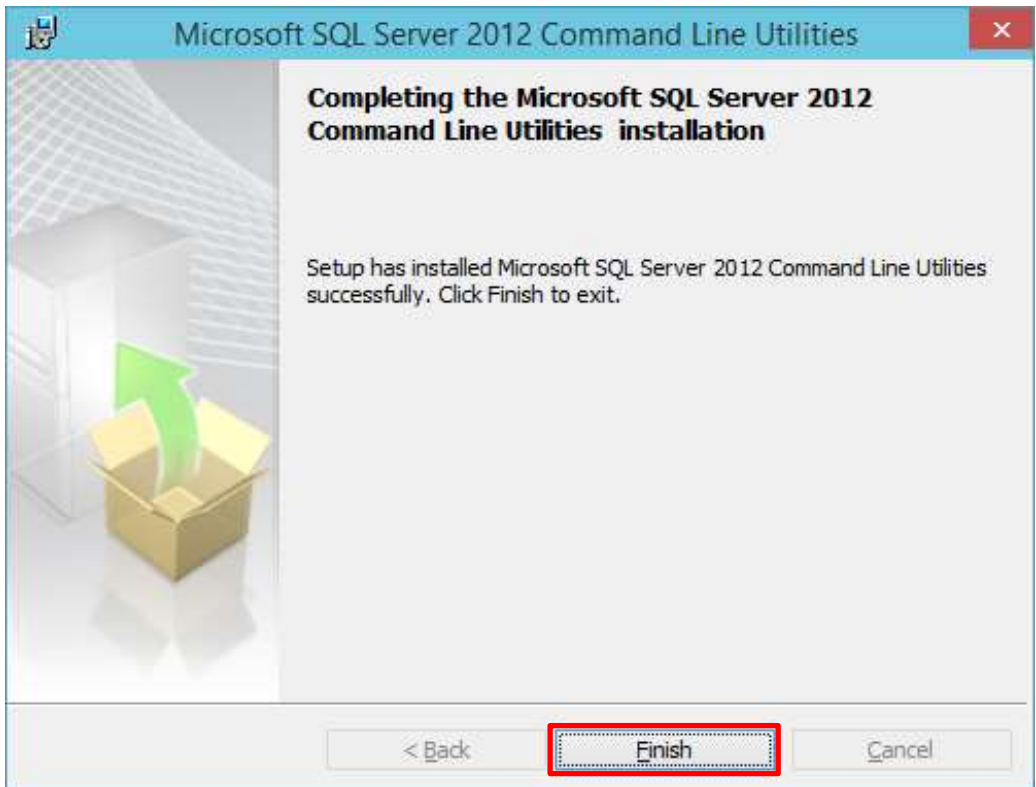
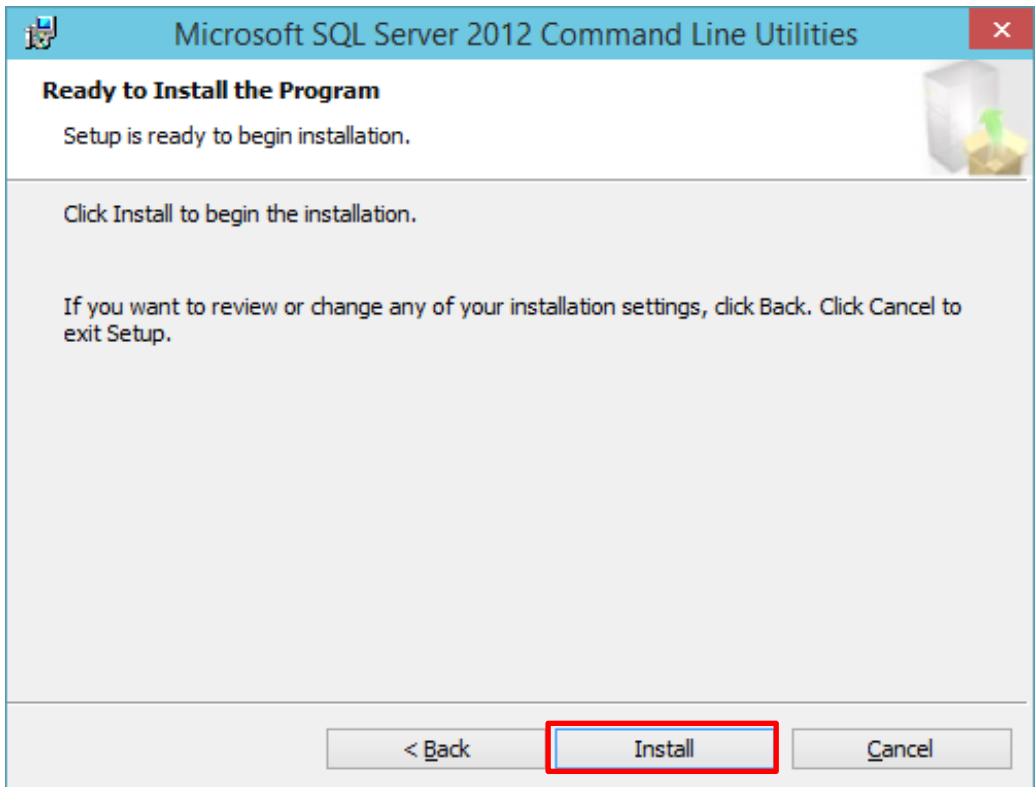
C) Microsoft® SQL Server® 2012 Command line

Download and execute *SqlCmdLnUtils.msi* from:

- <http://go.microsoft.com/fwlink/?LinkID=239649&clcid=0x409> (32 bits system)
- Or
- <http://go.microsoft.com/fwlink/?LinkID=239650&clcid=0x409> (64 bits system).

Follow the instructions, as shown below:





IV] FramiGest

Click on the « setup.exe » file, and follow the installation instructions (click on “Next” as many times as needed).

First start:

Start FramiGest with the desktop icon.

Click OK on the welcoming window.

Click OK on the License key window, you have 15 days for trial, you can ask for your license key later.

The next window “Loading” may take a few minutes.

The practitioner window will then appear. The practitioner list should be empty, you can start using FramiGest!

Starting FramiGest for the first time with another Windows Account:

Warning, if you are using multiple Windows accounts with FramiGest, each account will have its own settings (the welcoming window will appear for every account first time).

You can now use the FRAMIGEST User Manual.